



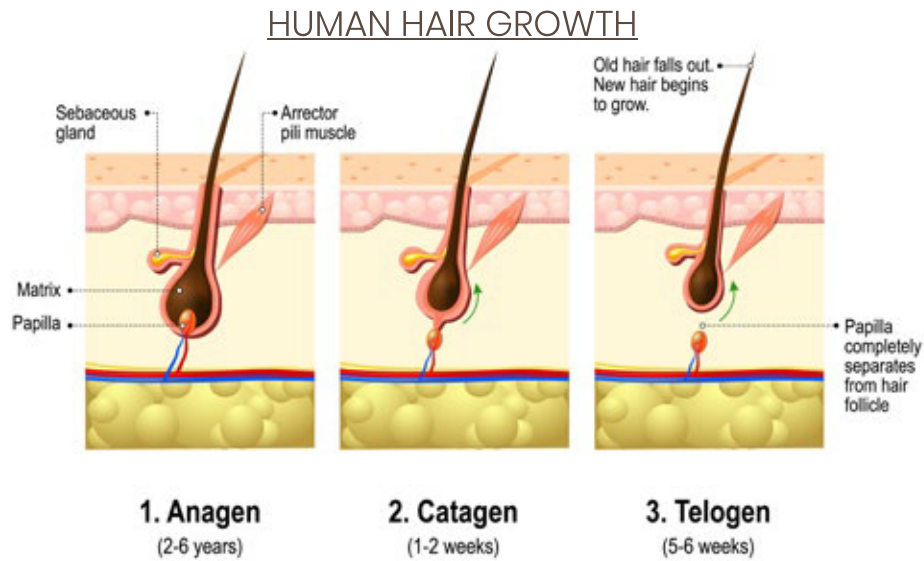
HAIR RE-GROWTH SYSTEM (HRGS)

*Let each hair strand look
fabulous with HRGS*

THE HAIR GROWTH CYCLE

The hair growth cycle consists of three phases: Growth (Anagen phase), Transition (Catagen phase), Resting (Telogen phase).

Hair Re-Growth System with the great technology of Low level laser therapy (LLL) is used to increase blood flow in the scalp and stimulate metabolism in catagen or telogen follicles, resulting in the production of anagen hair.

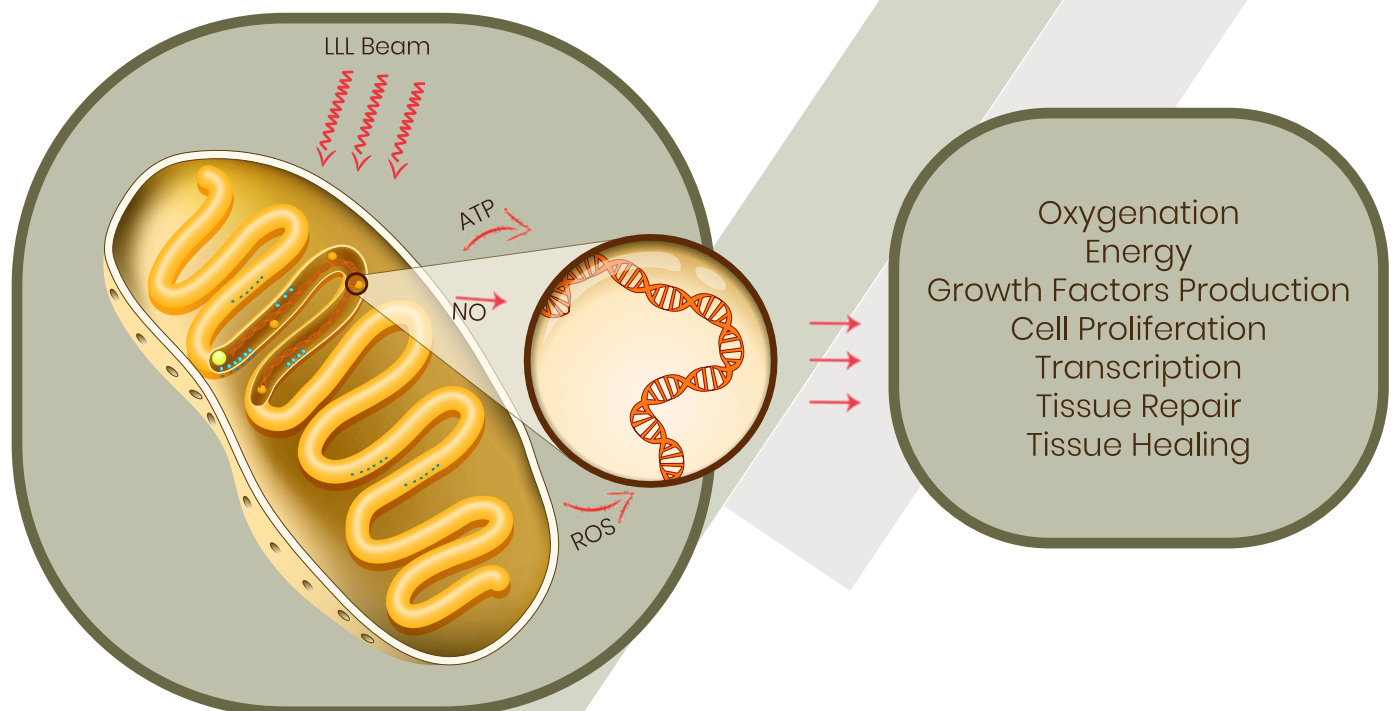


Hair Re-Growth System is an integrated system that utilizes Diode low level laser beam directly on the affected areas of the scalp with less hair. Laser beam at a wavelength 650nm penetrates into the roots of the hair follicles, activating weak hair follicle cells, improving vascularization and subsequently enhancing the blood circulation surrounding hair follicles, providing more oxygen, nutrients, vitamins and basic elements to stop hair falling and start hair re-growth.

The low level laser beams are non-invasive, painless and deliver just the right energy directly to the scalp.

HOW DOES LLL AFFECT HAIR GROWTH ?

- The photons of laser act on cytochrome C oxidase found in the mitochondria leading to the production of Adenosine Tri Phosphate (ATP) responsible for releasing energy and stimulating metabolic processes necessary for hair growth.
- Release of Nitric Oxide (NO) leads to increased vascularisation to the scalp distributing nutrients and oxygen to the hair roots.
- Excessive build-up of DHT is prevented








HAIR RE-GROWTH SYSTEM PRINCIPLE

- Promote absorption of nutrients.
- Accelerate hair's blood circulation and metabolism.
- Regulate oil secretion
- Effectively enhances scalp health's condition

INDICATIONS

- There is a sign of hair loss
- The hair is badly damaged
- Pathological alopecia, physical alopecia
- Alopecia in the stage of Catagn or the stage of Telogen
- Post - nursing

HANDPIECES AND THEIR FUNCTIONS

 <p>ELECTROPORATION</p>	<ul style="list-style-type: none"> ● Electroporation induces a dramatic and reversible increase in trans-membrane transport . This action will create “pores or aqueous pathways”. ● Electroporation efficiently enhances transdermal penetration of hair rejuvenating solutions containing: growth factors, coenzymes, vitamins and minerals stimulating the vitality of hair follicles.
 <p>PLASMA DEVICE</p>	<ul style="list-style-type: none"> ● A plasma based Energy. ● The Plasma device is the fourth state of the matter producing a high frequency current that ionizes the gas and effectively stimulates the blood circulation, reduces folliculitis, regulates oil secretion and eliminates microorganisms.
 <p>GALVANIC DEVICE</p>	<ul style="list-style-type: none"> ● A device that uses low-level galvanic (electric) current. ● Enables Ionization of “ Hair Re-gain Mesotherapy solutions” like Dermaheal HL, Dermaheal Stem C´erum HL and Hair Fillers. ● Enhances absorption of their active components when applied on the scalp, facilitates their permeation deep to the hair roots and eventually improves hair radiance and hydration.
 <p>HIGH ZOOMING CAMERA</p>	<ul style="list-style-type: none"> ● Zooms hair follicles and scalp up to 70X and 200X. ● Helps to test and analyze hair follicle's condition.
 <p>LLL PANEL</p>	<ul style="list-style-type: none"> ● Large surface area provides full coverage for the hair. ● Promotes absorption of nutrients. ● Accelerates hair's blood circulation and metabolism. ● Regulates oil secretions.

TECHNICAL PARAMETERS

Laser Classification	Class IIIa				
Voltage	220-240V				
Power	180W				
Frequency	60Hz				
LLL Wavelength	650nm				
LLL Source Panel	<table border="1" style="width: 100%;"> <tbody> <tr> <td>Area of 1 panel = 14cm X 14cm</td> <td rowspan="3" style="vertical-align: middle; text-align: center;">x 4</td> </tr> <tr> <td>100 diodes/ panel</td> </tr> <tr> <td>Each panel is 5mWatt</td> </tr> </tbody> </table>	Area of 1 panel = 14cm X 14cm	x 4	100 diodes/ panel	Each panel is 5mWatt
Area of 1 panel = 14cm X 14cm	x 4				
100 diodes/ panel					
Each panel is 5mWatt					
Energy Density	20 mj/ cm				
Display	8 inch, Touch screen				
USB	Export photo				
Warranty	1 Year				
Packing Size	114*56*55 cm				
Weight	28 Kg				

